



St. Thomas-Elgin Social Services 2023 Update



Contents of the Report Presented By:

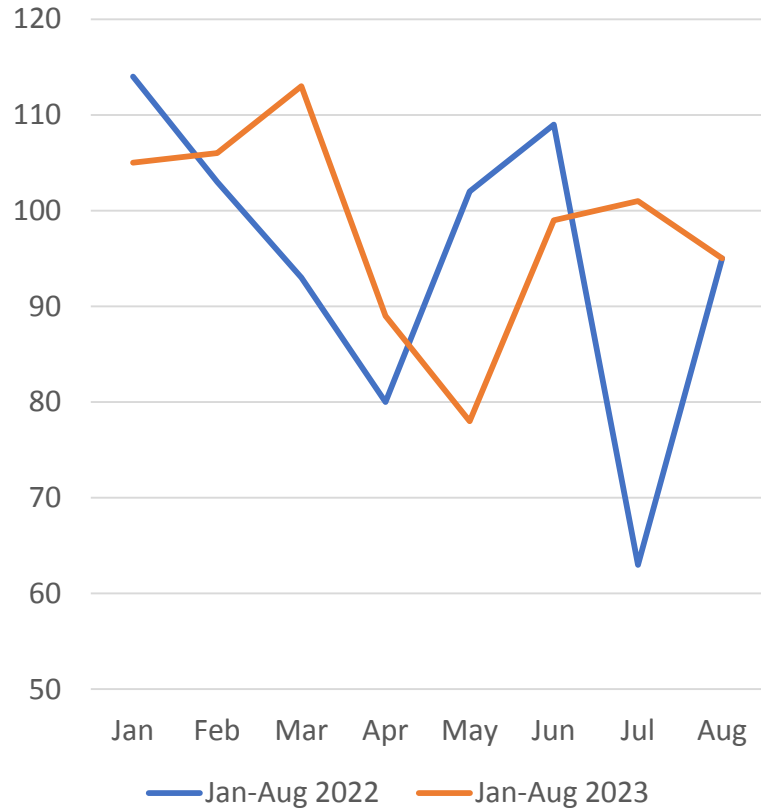
- Heather Sheridan, Director, St. Thomas-Elgin Social Services
- Joanne Weber, Manager, Ontario Works
- Danielle Neilson, Manager, Housing Stability Services
- Teresa Sulowski, Manager, Children's Services



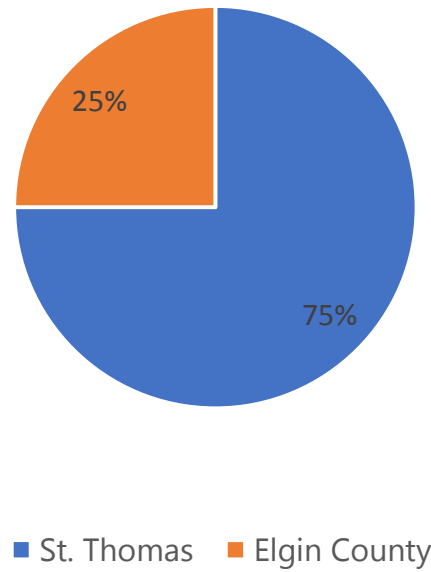
Ontario Works 2023 Update

Elgin County Ontario Works

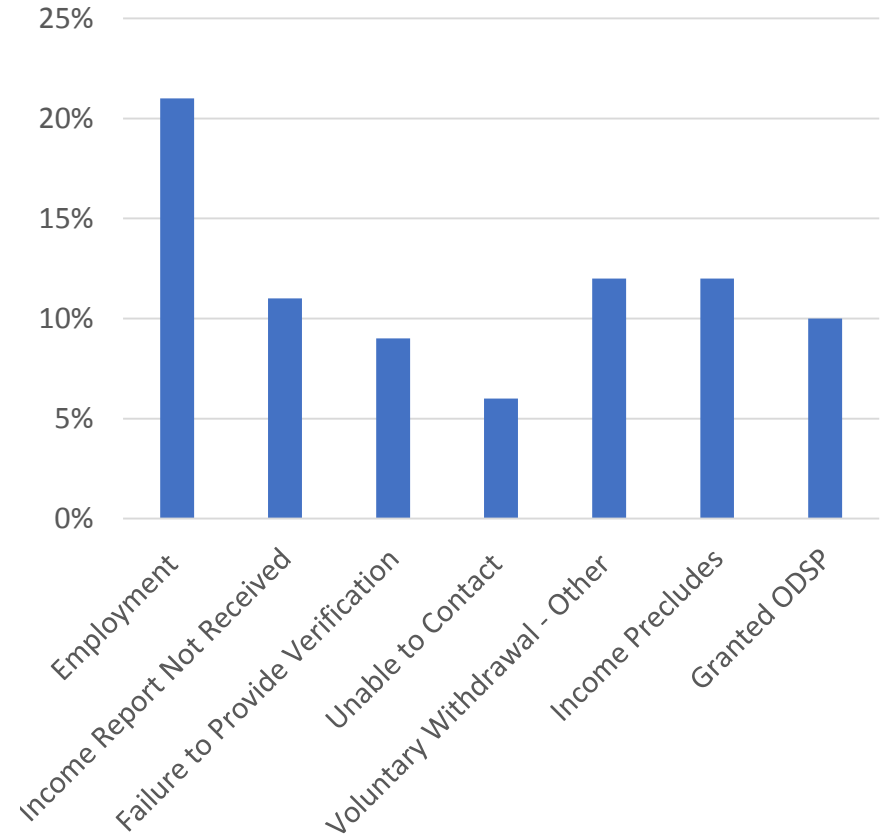
Applications Received



Place of Residence



Case Closures



Employment Services Transformation

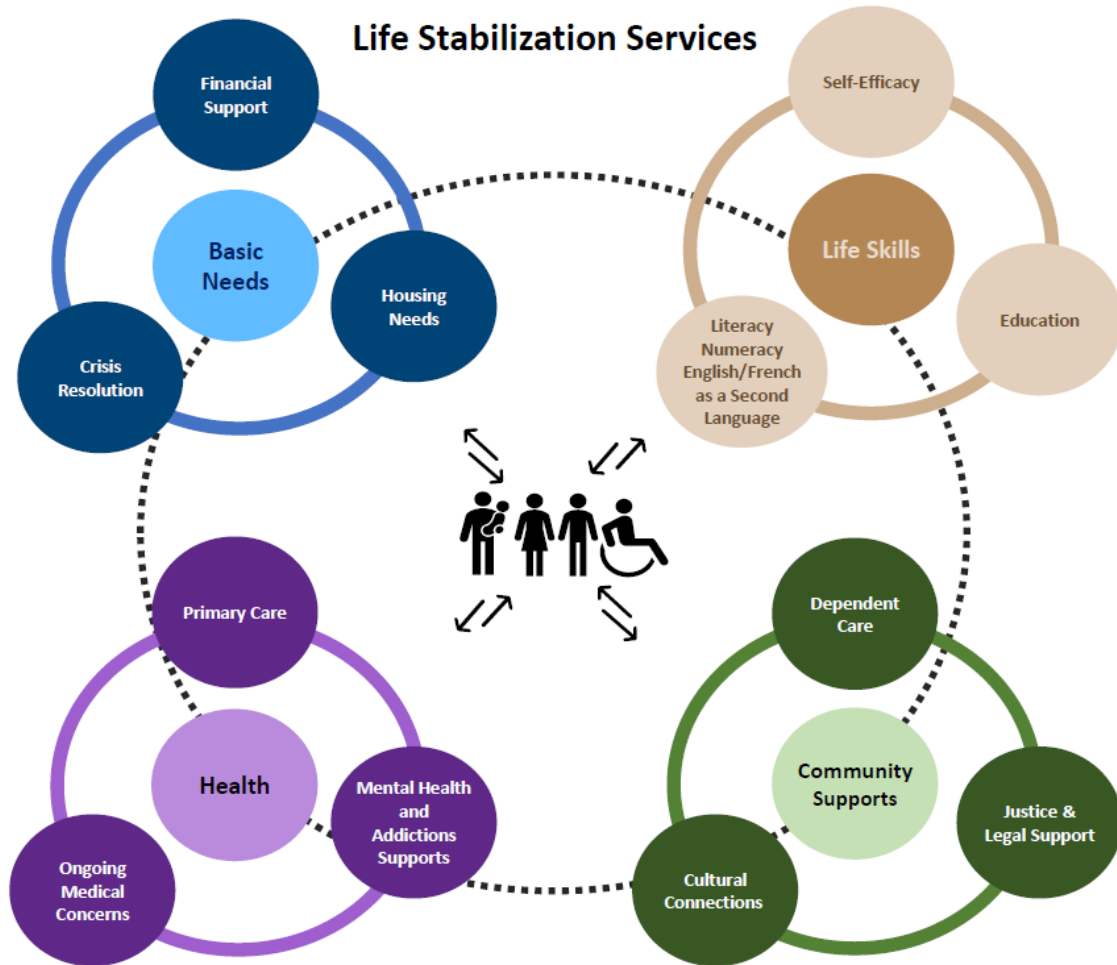
- With EST, the Ministry of Labour, Immigration, Training and Skills Development (MLITSD), through Employment Ontario (EO) is responsible for delivering employment and training services.
- Ontario Works is responsible for delivering case management services that focus on connecting clients to person-centered supports and services that prepare and enable them to participate in EO employment services and employment, and to make referrals to employment services when clients are ready.

**Improved
readiness for
employment**



**Increased
resiliency,
independence
and participation
in community**

Employment Services Transformation



Person-centered supports and services are ones that can be categorized as addressing:

- **Crisis and safety** - such as financial support, housing, crisis resolution
- **Health** - such as access to health supports and benefits including mental health and addictions
- **Life skills** – such as self-sufficiency, education and literacy, language and numeracy supports
- **Community supports** – such as access to dependent care or caregiving supports, cultural connections (such as immigration and settlement supports) and justice and legal support.

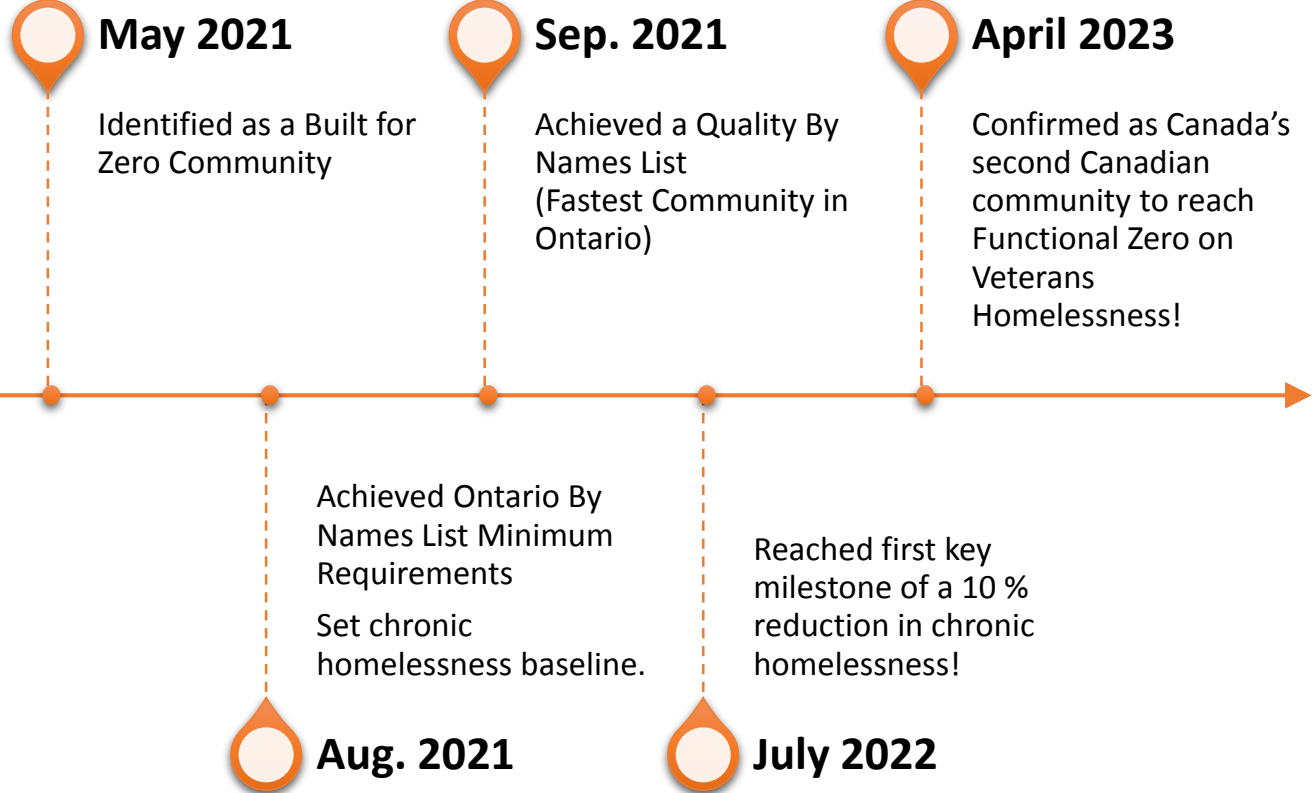


Housing & Homelessness Services

*Elgin County
Homelessness*

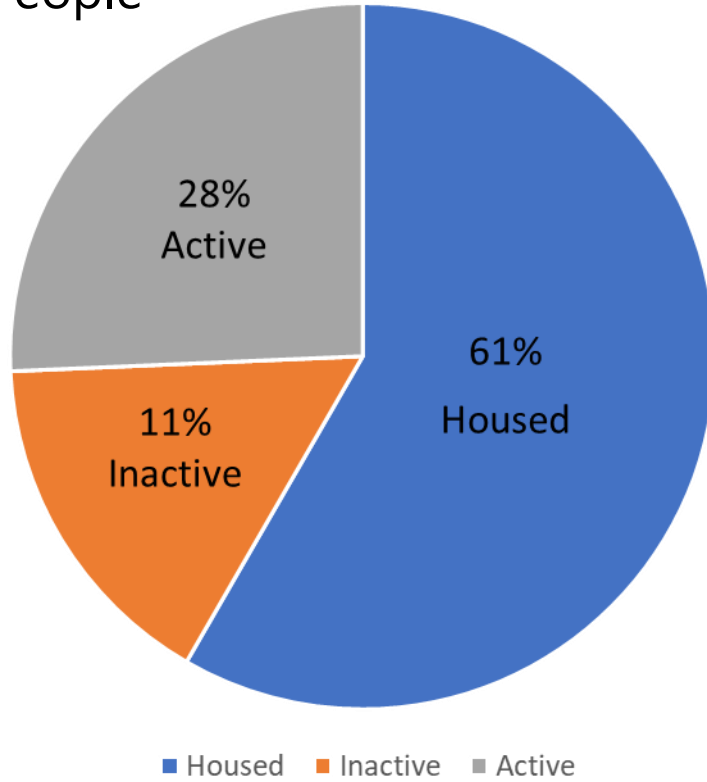
*Response
2023 Update*

BFZ-C Milestones

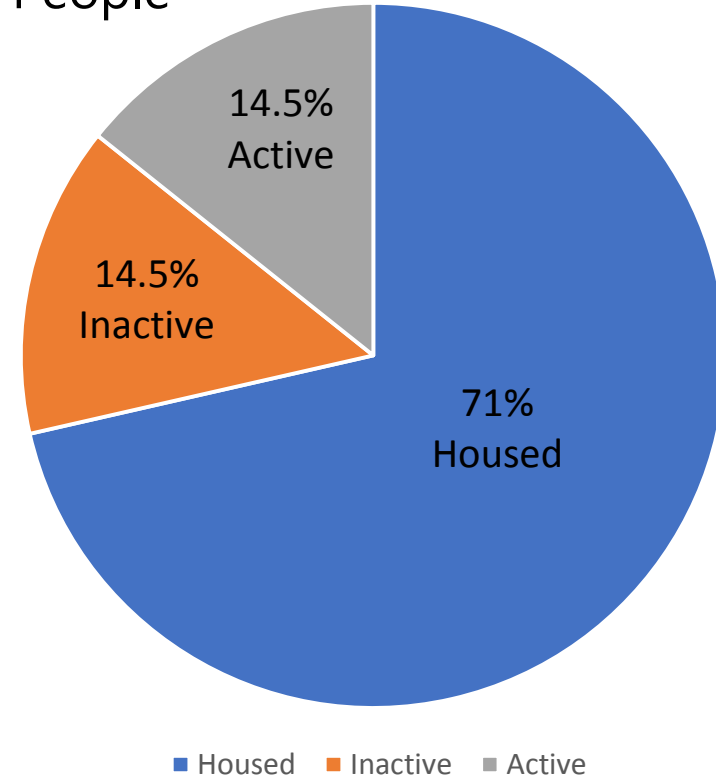


By Names List - Since July 2020

Total By Name List Data: 559 People



Total Elgin County Data: 84 People



St. Thomas-Elgin Coordinated Access

Community-wide system that streamlines the process for people experiencing homelessness to access housing and supports and is an essential step to smarter, faster, more coordinated housing



<https://caeh.ca/cas/>

East & West Elgin Initiatives

Family Central

519.765.2444

- Supportive Housing
- Food Security & Drop In
- Winter Emergency Shelter

West Elgin Community

Health Centre

519.768.1715 ext. 2317

- Rural Homelessness System Navigation
- Winter Emergency Shelter

Supports and services for people across Elgin County



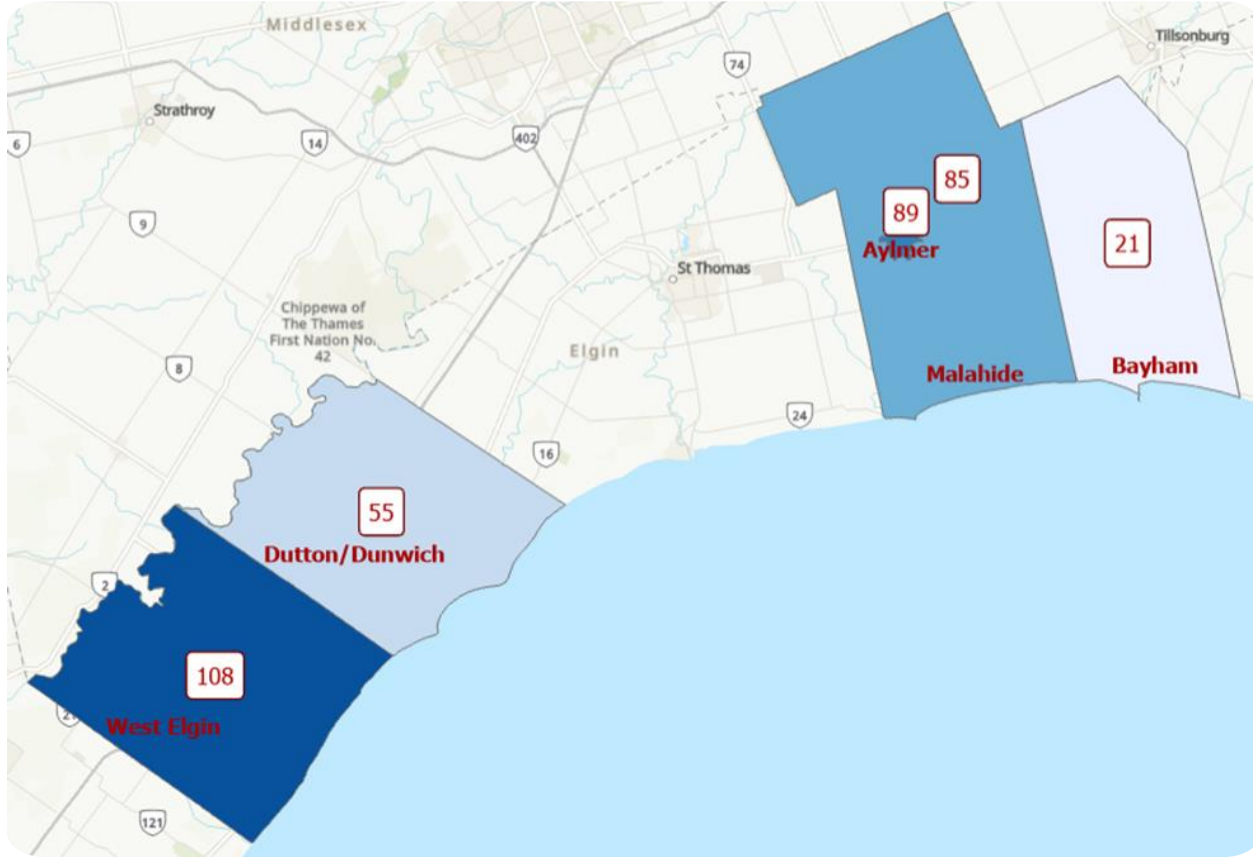
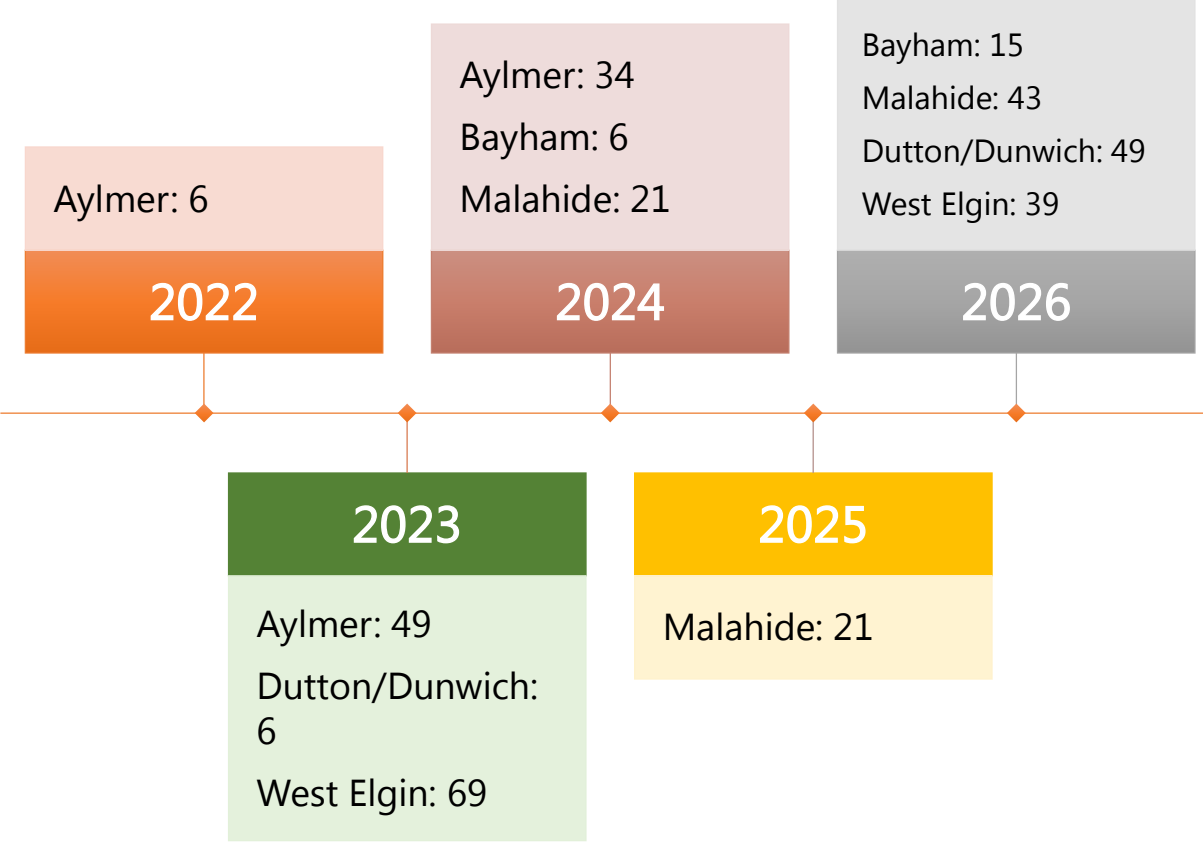
Children's Services 2023 Update

Child Care Access and Inclusion Framework Update

- The Access and Inclusion Framework was developed to allocate funding for new child care spaces for children 0-5 years of age with a focus on improving equity of access by working towards a common provincial access ratio of 37%
- Currently St. Thomas-Elgin has an access ratio of 13.6% which is well below the provincial target
- We created our initial plan with a focus on the following:
 - Low-income families
 - Vulnerable communities
 - Diverse communities
 - Children with special needs
 - Francophone families
 - Indigenous families
 - Families needing more flexible models of care, including evening, weekend and overnight care
- We were allotted funding for 701 new spaces which, if created, would bring our overall access to 36.76%

- The next slide details where spaces in the county have been allotted, and in what timeframes

Allocated New Spaces



Child Care Access and Inclusion Framework Update

Continued

Although we have submitted our initial plan, we are working on collecting some additional, more fulsome data to inform the plan as it moves forward.

This includes:

- Staff will examine available demographic and socio-economic indicators
- Staff will partner with Economic Development to learn more about planned growth and development with St. Thomas and Elgin County
- To help identify priority neighbourhoods, staff will use the EDI (Early Development Instrument) that is completed by kindergarten teachers in our community to measure children's ability to meet age-appropriate development expectations in five general domains

Child Care Access and Inclusion Framework Update

Continued

Although the addition of 701 childcare spaces for children 0-5 years of age is desperately needed, there are some barriers to this expansion that need to be noted.

1. The allocated capital funding is not enough to expand or create any new locations
2. Based on ministry guideline targets, St. Thomas and Elgin County are limited in the number of not-for-profit spaces we can add to the system
3. No new school builds are planned prior to the end of the agreement which means that school board capital funding cannot be utilized
4. There is a lack of appropriate commercial rental space that could be configured for child care, especially in some our targeted neighborhoods
5. Finally, there is a shortage of qualified Early Child Educators within the Ontario Child Care and Early Years system

Contact Information



Heather Sheridan

Director of St. Thomas-Elgin Social
Services



230 Talbot Street

St. Thomas, Ontario, N5P 1B2

519-631-9350 ext 7134

hsheridan@stthomas.ca

Please feel free to contact me with any questions or concerns regarding any of the programs administered through Social Services.